



**PARKWAY**SCHOOLS

HIGHER EXPECTATIONS. BRIGHTER FUTURES.

# Financial Statements

*Date: December 2018*

PARKWAY SCHOOL DISTRICT  
MONTHLY FINANCIAL REPORT  
TABLE OF CONTENT

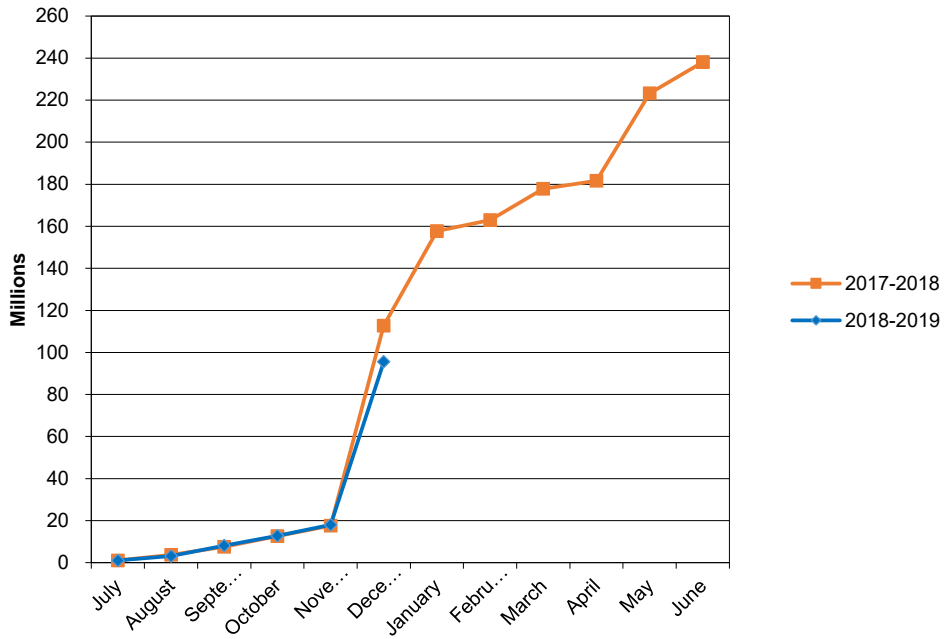
<u>DOCUMENT</u>	<u>PAGE</u>
EXECUTIVE SUMMARY. . . . .	1 - 2
GRAPHS - REVENUE, EXPENDITURE, CASH, AND FUND BALANCE .	3 - 5
RECAPITULATION OF FUNDS . . . . .	6
ACCRUAL BALANCE SHEET. . . . .	7
BREAKOUT OF CASH AND INVESTMENTS . . . . .	8
MODIFIED ACCRUAL REVENUE SCHEDULE . . . . .	9
EXPENDITURE SUMMARY BY OBJECT . . . . .	10
FOOD SERVICE INCOME AND EXPENSE . . . . .	11
EXPENDITURE SUMMARY BY BUILDING . . . . .	12
EXPENDITURE SUMMARY BY PROGRAM . . . . .	13 - 15
GLOSSARY . . . . .	16 - 17
PURCHASING REPORTS . . . . .	18 - 31



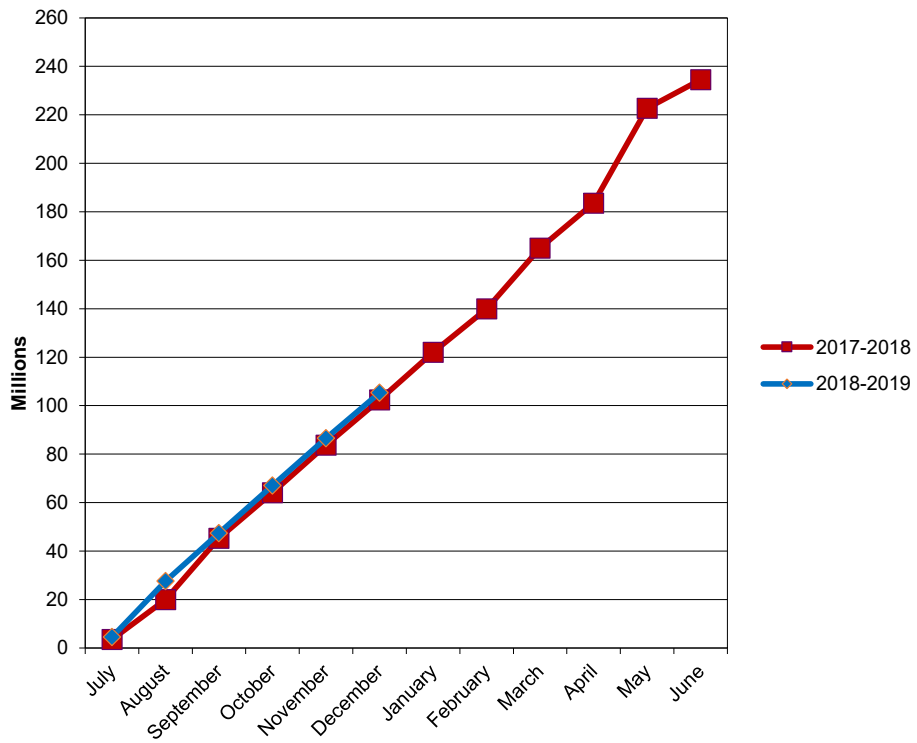
5. State Revenue –DESE will be adjusting the State Adequacy Target for the formula revenues. The State Adequacy Target is still well below the amount determined by the original formula legislation.
6. Unaccredited Schools – Parkway is continuing provide educational services for students from both Riverview Gardens and the Normandy School Districts that have been enrolled in Parkway. The tuition to be charged to the Normandy School District and to Riverview Garden’s School District is lower than Parkway’s regular tuition rates and is the rate charged to VICC. The students are able to remain in Parkway until they are at a natural transition and then will return to their home district.
7. Spot Market Purchases – For information purposes, fiscal year-to-date purchases under the spot market procurement policy are as follows:

Fuel	\$	232,721.32
Paper	\$	130,830.00
Trash Liner	\$	30,492.00
Produce:	\$	49,295.00

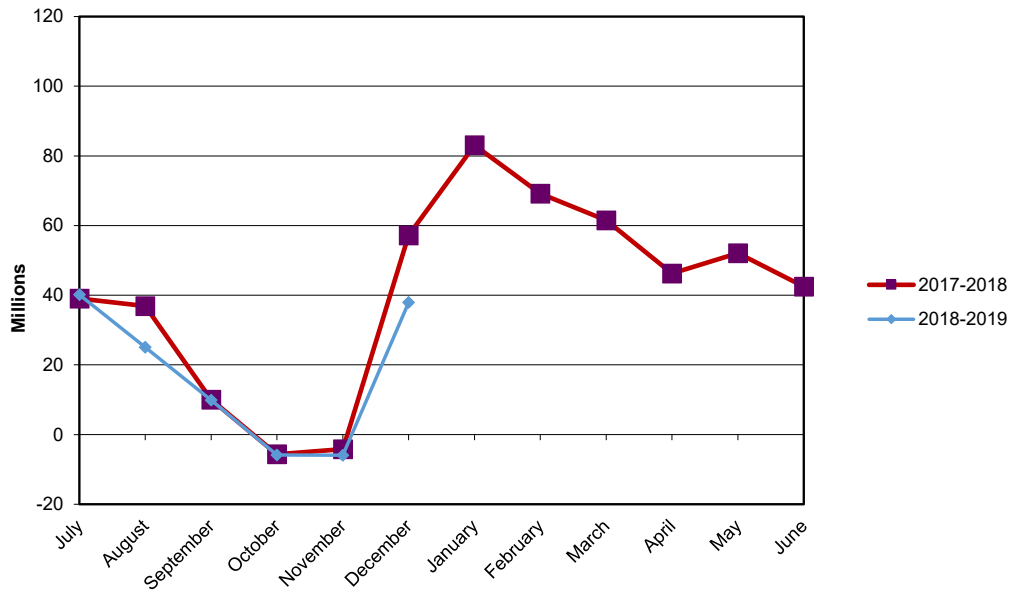
## PARKWAY SCHOOL DISTRICT ACTUAL OPERATING REVENUE

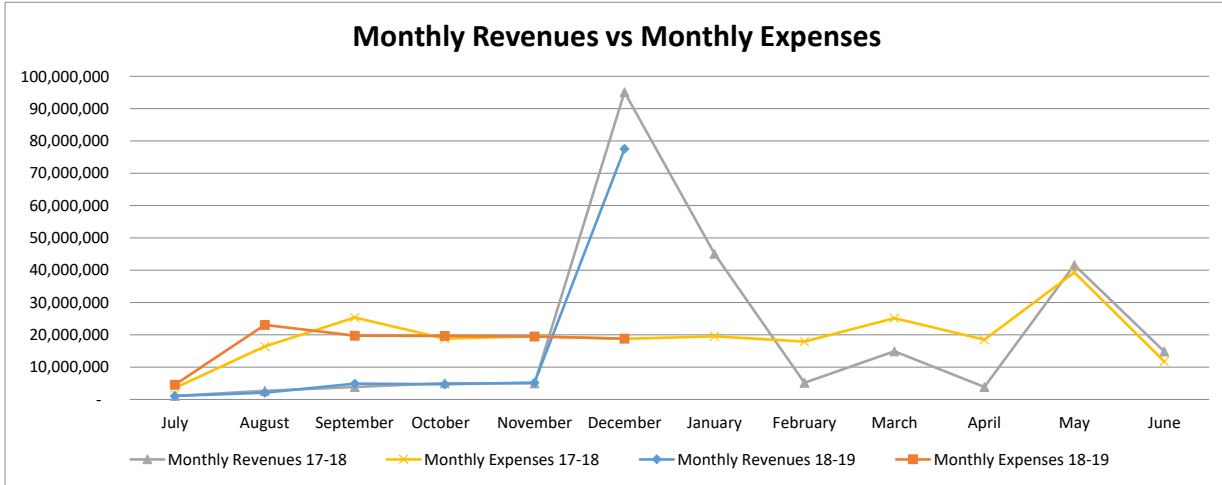
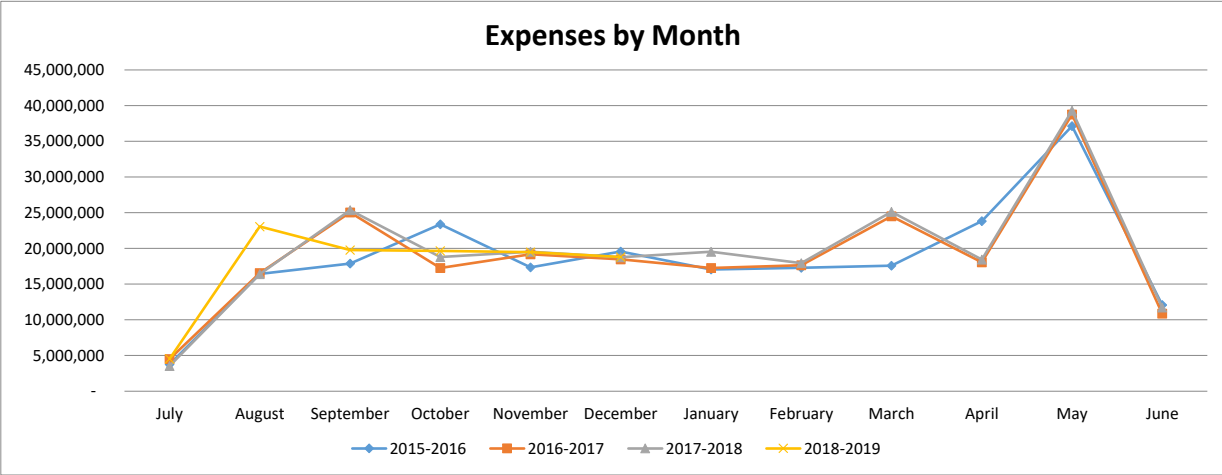
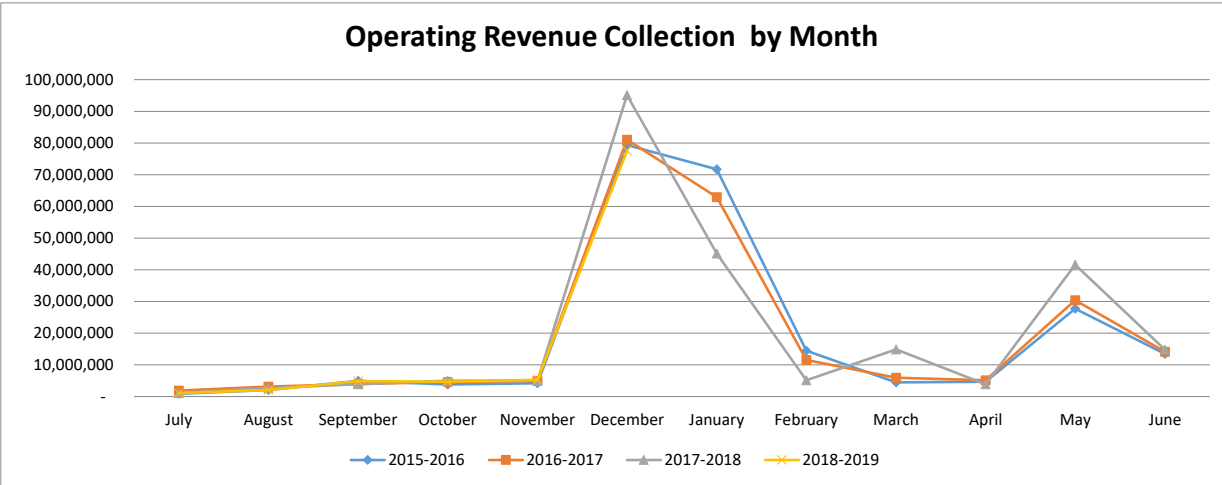


## PARKWAY SCHOOL DISTRICT ACTUAL OPERATING EXPENDITURES



# PARKWAY SCHOOL DISTRICT OPERATING FUND CASH AND INVESTMENTS





**Parkway School District  
Recapitulation of Funds  
Budget 2018-2019 With Restatement of Opening Balances**

FY2019 Full Year Projection

	<b>Operating</b>	<b>Debt Service</b>	<b>Capital Projects</b>	<b>2014 Bond Issue</b>	<b>All Funds</b>
Beginning Fund Balance	46,492,486	36,717,985	2,253,613	17,496,421	102,960,505
Revenues	240,064,725	23,671,221	7,427,439	15,000	271,178,385
Expenses	238,077,339	25,433,648	3,592,730	17,511,421	284,615,138
Ending Fund Balance	48,479,872	34,955,558	6,088,322	-	89,523,752

ACTUAL FY19 THROUGH 12/31/18

	<b>Operating</b>	<b>Debt Service</b>	<b>Capital Projects</b>	<b>2014 Bond Issue</b>	<b>All Funds</b>
Beginning Fund Balance	46,492,486	36,717,985	2,253,613	17,496,421	102,960,505
Revenues	95,525,171	10,009,704	3,207,083	136,356	108,878,314
Expenses	105,316,001	3,462,582	1,818,734	12,219,785	122,817,102
Ending Fund Balance	36,701,656	43,265,107	3,641,962	5,412,992	89,021,717

ACTUAL FY18 THROUGH 12/31/17

	<b>Operating</b>	<b>Debt Service</b>	<b>Capital Projects</b>	<b>2014 Bond Issue</b>	<b>All Funds</b>
Beginning Fund Balance	44,415,182	13,767,360	652,502	38,079,930	96,914,974
Revenues	112,685,852	42,065,563	1,768,087	92,384	156,611,886
Expenses	102,398,455	40,031,775	2,357,737	13,022,497	157,810,464
Ending Fund Balance	54,702,579	15,801,148	62,852	25,149,817	95,716,396



**PARKWAY SCHOOL DISTRICT  
ACCUAL BALANCE SHEET  
December 31, 2018**

	<b>TOTAL- ALL FUNDS 12/31/18</b>	<b>TOTAL- ALL FUNDS 12/31/2017</b>
<b>ASSETS</b>		
Cash & Investments	\$ 104,144,543	106,873,960
Accounts Receivable	\$ 610,800	247,270
Inventories	\$ 780,274	1,691,954
Prepaid Expenses	\$ 1,418,721	1,249,621
Land	\$ 3,457,837	3,457,837
Land Improvements	\$ 17,072,007	18,034,643
Buildings/Improvements	\$ 163,361,982	151,631,814
Construction in Progress	\$ 50,522,194	52,539,700
Equipment	\$ 12,674,728	13,815,316
<b>Total Assets</b>	<b>\$ 354,043,086</b>	<b>349,542,115</b>
<b>LIABILITIES &amp; FUND BALANCE</b>		
Accounts Payable - Operating Funds	\$ 707,718	1,163,138
Accounts Payable - Bond Issue Funds	\$ -	89,546
Wages, Payroll Taxes, and Benefits Payable	\$ 3,339,229	4,271,772
Bonds Payable	\$ 206,945,000	201,620,000
Interest Payable	\$ 2,578,845	1,924,587
Liability for Compensated Absences	\$ 1,502,251	1,432,869
Liability for Early Retirement	\$ 902,168	1,932,641
<b>Total Liabilities</b>	<b>\$ 215,975,211</b>	<b>212,434,553</b>
Bond Issue Fund Balance	\$ 5,412,992	25,149,817
Debt Service Fund Balance	\$ 43,265,107	15,801,148
Capital Projects Fund Balance	\$ 3,641,962	62,852
Equity in Fixed Assets less Long Term Liabilities	\$ 35,160,484	32,569,213
Medical Fund Balance	\$ 13,885,674	8,821,952
Operating Fund Balance	\$ 36,701,656	54,702,579
<b>Total Fund Balance</b>	<b>\$ 138,067,875</b>	<b>137,107,561</b>
<b>TOTAL LIABILITIES &amp; FUND BALANCE</b>	<b>\$ 354,043,086</b>	<b>349,542,114</b>

**BREAKOUT OF CASH & INVESTMENT BALANCE**

	<u>12/31/18</u>	<u>12/31/2017</u>
MEDICAL FUND CASH	13,885,674	8,821,952
DEBT SERVICE FUND CASH	40,314,572	15,779,881
DEBT SERVICE FUND INVESTMENTS	2,950,536	7,731
BOND ISSUE FUND CASH	5,405,187	5,377,112
BOND ISSUE FUND INVESTMENTS	7,805	19,726,893
CAPITAL PROJECTS FUND CASH	3,616,098	-
OPERATING FUND CASH	37,964,671	57,160,390
<b>TOTAL</b>	<b>104,144,543</b>	<b>106,873,960</b>

**RESTRICTED RESERVE**

	<u>12/31/18</u>	<u>12/31/2017</u>
FOOD SERVICE	242,150	393,558
MEDICAL BENEFITS	13,885,674	8,821,952
STUDENT ACTIVITY	3,166,836	2,907,787
<b>TOTAL</b>	<b>17,294,660</b>	<b>12,123,297</b>

PARKWAY SCHOOL DISTRICT  
MODIFIED ACCRUAL REVENUE SCHEDULE  
TOTAL ALL FUNDS

	YEAR TO DATE 12-31-2018				YEAR TO DATE 12-31-2017			
	BUDGETED REVENUE	REVENUE REALIZED	% REALIZED	BALANCE TO BE REALIZED	REVENUE** 6/30/2018	REVENUE REALIZED	% REALIZED	BALANCE TO BE REALIZED
<b>LOCAL</b>								
Property Taxes	172,325,159	73,663,576	42.75%	98,661,583	168,199,861	90,884,513	54.03%	77,315,348
Sales Tax	15,819,210	5,242,142	33.14%	10,577,068	15,440,981	4,751,152	30.77%	10,689,829
M&M Surtax	4,733,790	590,095	12.47%	4,143,695	4,857,510	1,253,266	25.80%	3,604,244
Food Service	4,070,811	1,992,753	48.95%	2,078,058	4,209,014	1,230,070	29.22%	2,978,944
Other Local	8,256,010	1,323,148	16.03%	6,932,862	9,245,144	2,065,017	22.34%	7,180,127
VICC-VST Revenue	7,431,350	2,427,517	32.67%	5,003,833	7,890,932	2,379,830	30.16%	5,511,102
<b>TOTAL LOCAL</b>	<b>212,636,330</b>	<b>85,239,231</b>	<b>40.09%</b>	<b>127,397,099</b>	<b>209,843,442</b>	<b>102,563,848</b>	<b>48.88%</b>	<b>107,279,594</b>
<b>INTEREST</b>	<b>894,906</b>	<b>181,860</b>	<b>20.32%</b>	<b>713,046</b>	<b>798,119</b>	<b>128,721</b>	<b>16.13%</b>	<b>669,398</b>
<b>COUNTY</b>	<b>3,216,007</b>	<b>995,972</b>	<b>30.97%</b>	<b>2,220,035</b>	<b>3,299,694</b>	<b>722,279</b>	<b>21.89%</b>	<b>2,577,415</b>
<b>STATE</b>								
Basic Formula	2,413,326	1,077,217	44.64%	1,336,109	2,702,394	1,114,111	41.23%	1,588,283
Classroom Trust	6,569,703	2,750,765	41.87%	3,818,938	6,406,422	2,860,620	44.65%	3,545,802
Transportation	1,121,936	618,064	55.09%	503,872	1,168,043	581,871	49.82%	586,172
Other State	1,586,861	1,316,775	82.98%	270,086	1,998,855	975,571	48.81%	1,023,284
<b>TOTAL STATE</b>	<b>11,691,826</b>	<b>5,762,821</b>	<b>49.29%</b>	<b>5,929,005</b>	<b>12,275,714</b>	<b>5,532,173</b>	<b>45.07%</b>	<b>6,743,541</b>
<b>FEDERAL</b>								
Federal Food Service	2,112,600	851,738	40.32%	1,260,862	2,145,449	856,245	39.91%	1,289,204
Other Federal Entitlements	3,178,963	843,234	26.53%	2,335,729	2,991,905	1,179,315	39.42%	1,812,590
<b>TOTAL FEDERAL</b>	<b>5,291,563</b>	<b>1,694,972</b>	<b>32.03%</b>	<b>3,596,591</b>	<b>5,137,354</b>	<b>2,035,560</b>	<b>39.62%</b>	<b>3,101,794</b>
<b>OTHER FINANCING SOURCES</b>								
Transportation Reimbursement	2,748,874	62,096	2.26%	2,686,778	2,884,503	212,372	7.36%	2,672,131
Tuition From Other Districts	50,000	19,891	39.78%	30,109	206,142	81,922	39.74%	124,220
Sale Of Property	35,219	7,635	21.68%	27,584	35,219	6,042	17.16%	29,177
<b>TOTAL OTHER FINANCING SOURCES</b>	<b>2,834,093</b>	<b>89,622</b>	<b>3.16%</b>	<b>2,744,471</b>	<b>3,125,864</b>	<b>300,336</b>	<b>9.61%</b>	<b>2,825,528</b>
<b>SUB-TOTAL OPERATING REVENUE</b>	<b>236,564,725</b>	<b>93,964,478</b>	<b>39.72%</b>	<b>142,600,247</b>	<b>234,480,187</b>	<b>111,282,917</b>	<b>47.46%</b>	<b>123,197,270</b>
<b>STUDENT ACTIVITIES</b>	<b>3,500,000</b>	<b>1,560,693</b>	<b>44.59%</b>	<b>1,939,307</b>	<b>3,623,837</b>	<b>1,402,935</b>	<b>38.71%</b>	<b>2,220,902</b>
<b>TOTAL OPERATING REVENUE</b>	<b>240,064,725</b>	<b>95,525,171</b>	<b>39.79%</b>	<b>144,539,554</b>	<b>238,104,024</b>	<b>112,685,852</b>	<b>47.33%</b>	<b>125,418,172</b>
<b>NON-OPERATING REVENUES</b>								
2015 Bond Issue Interest/Premium	15,000	136,356	909.04%	(121,356)	302,657	92,384	30.52%	210,273
Refunding Bond Issuance	-	-	0.00%	-	27,405,000	-	0.00%	27,405,000
Refunding Bond Issue Premium	-	-	0.00%	-	2,276,429	-	0.00%	2,276,429
Debt Service Property Taxes	22,532,176	9,631,795	42.75%	12,900,381	22,185,774	11,987,782	54.03%	10,197,992
Debt Service Interest/Premium	505,192	262,918	52.04%	242,274	729,102	2,581,022	354.00%	(1,851,920)
Debt Service County Revenue	633,853	114,991	18.14%	518,862	642,409	27,496,759	4280.26%	(26,854,350)
Cap. Projects Property Taxes	6,883,809	2,942,612	42.75%	3,941,197	2,263,855	1,223,243	0.00%	1,040,612
Capital Projects Other	243,396	72,701	29.87%	227,299	412,470	16,868	0.00%	395,602
Capital Projects Grants	-	-	0.00%	-	290,055	290,055	0.00%	-
Marketing Agreement	300,000	191,667	63.89%	-	378,750	237,917	62.82%	140,833
Capital Interest/Premium	234	103	44.02%	131	236	4	100.00%	232
<b>TOTAL ALL REVENUE SOURCES</b>	<b>271,178,385</b>	<b>108,878,314</b>	<b>40.15%</b>	<b>162,300,071</b>	<b>294,990,760</b>	<b>156,611,886</b>	<b>53.09%</b>	<b>138,378,874</b>

EXPENDITURE SUMMARY BY OBJECT  
TOTAL ALL FUNDS  
December 31, 2018

	BUDGET 2018-2019	ACTUAL EXPENDITURES YTD 12/31/2018	% EXPENDED 2018-2019	ACTUAL** EXPENDITURES 06/30/2018	ACTUAL EXPENDITURES YTD 12/31/2017	% EXPENDED 2017-2018	CHANGE FROM PRIOR YEAR \$	%
<b>SALARIES</b>								
Certificated	100,407,728	41,961,251	41.79%	98,362,989	41,205,313	41.89%	755,938	-0.10%
Classified	38,863,174	17,089,942	43.97%	37,714,509	16,880,163	44.76%	209,779	-0.78%
Administrative	11,987,413	6,058,655	50.54%	11,740,688	5,904,563	50.29%	154,092	0.25%
<b>TOTAL SALARIES</b>	<b>151,258,315</b>	<b>65,109,848</b>	<b>43.05%</b>	<b>147,818,186</b>	<b>63,990,039</b>	<b>43.29%</b>	<b>1,119,809</b>	<b>-0.24%</b>
<b>BENEFITS</b>								
Retirement, Social Security and Medicare	25,037,375	10,928,283	43.65%	25,027,067	10,766,582	43.02%	161,701	0.63%
Medical, Dental and Life Insurance	28,999,615	12,337,443	42.54%	27,759,590	12,033,903	43.35%	303,540	-0.81%
<b>TOTAL BENEFITS</b>	<b>54,036,990</b>	<b>23,265,726</b>	<b>43.06%</b>	<b>52,786,657</b>	<b>22,800,485</b>	<b>43.19%</b>	<b>465,241</b>	<b>-0.14%</b>
<b>PURCHASED SERVICES</b>								
Substitute Services	2,948,473	1,105,832	37.51%	3,108,104	1,328,536	42.74%	(222,704)	-5.24%
Tuition	148,000	171,908	116.15%	137,925	110,628	80.21%	61,280	35.95%
Professional Services	2,848,330	1,130,535	39.69%	1,876,035	1,138,765	60.70%	(8,230)	-21.01%
Audit	34,000	33,800	99.41%	29,000	29,000	100.00%	4,800	-0.59%
Technical Services	92,400	76,920	83.25%	156,988	99,405	63.32%	(22,485)	19.93%
Legal Services	200,000	43,872	21.94%	171,663	95,547	55.66%	(51,675)	-33.72%
Property Services	2,184,431	1,050,703	48.10%	2,181,468	1,200,042	55.01%	(149,339)	-6.91%
Travel & Contracted Trans.	1,748,554	683,873	39.11%	2,354,238	605,278	25.71%	78,595	13.40%
Property Insurance	864,809	822,901	95.15%	830,850	780,247	93.91%	42,654	1.24%
Liability Insurance	847,639	800,343	94.42%	801,690	760,868	94.91%	39,475	-0.49%
Other Purchased Services	1,686,392	810,075	48.04%	1,664,595	561,994	33.76%	248,081	14.27%
<b>TOTAL PURCHASED SERVICES</b>	<b>13,603,028</b>	<b>6,730,762</b>	<b>49.48%</b>	<b>13,312,556</b>	<b>6,710,310</b>	<b>50.41%</b>	<b>20,452</b>	<b>-0.93%</b>
<b>CONSUMABLES</b>								
General Supplies	3,955,734	1,588,343	40.15%	3,977,905	1,771,319	44.53%	(182,976)	-4.38%
Instructional Supplies	8,320,158	4,140,647	49.77%	6,437,240	2,756,955	42.83%	1,383,692	6.94%
Library Books	279,575	163,330	58.42%	272,414	127,530	46.81%	35,800	11.61%
Energy Services	4,072,900	1,943,031	47.71%	3,989,929	1,709,612	42.85%	233,419	4.86%
Food Service Supplies	3,000,000	1,188,565	39.62%	2,462,106	1,338,990	54.38%	(150,425)	-14.77%
<b>TOTAL CONSUMABLES</b>	<b>19,628,367</b>	<b>9,023,916</b>	<b>45.97%</b>	<b>17,139,594</b>	<b>7,704,406</b>	<b>44.95%</b>	<b>1,319,510</b>	<b>1.02%</b>
<b>OPERATING LEASES</b>	<b>50,639</b>	<b>41,215</b>	<b>81.39%</b>	<b>37,823</b>	<b>37,823</b>	<b>100.00%</b>	<b>3,392</b>	<b>-18.61%</b>
<b>SUBTOTAL OPERATING EXPENSES</b>	<b>238,577,339</b>	<b>104,171,467</b>	<b>43.66%</b>	<b>231,094,816</b>	<b>101,243,063</b>	<b>43.81%</b>	<b>2,928,404</b>	<b>-0.15%</b>
<b>STUDENT ACTIVITIES</b>	<b>3,500,000</b>	<b>1,144,534</b>	<b>32.70%</b>	<b>3,431,904</b>	<b>1,155,392</b>	<b>33.67%</b>	<b>(10,858)</b>	<b>-0.97%</b>
<b>ANTICIPATED EXPENDITURE SAVINGS</b>	<b>(4,000,000)</b>	<b>-</b>	<b>0.00%</b>	<b>-</b>	<b>-</b>	<b>0.00%</b>	<b>-</b>	<b>0.00%</b>
<b>TOTAL OPERATING EXPENSES</b>	<b>238,077,339</b>	<b>105,316,001</b>	<b>44.24%</b>	<b>234,526,720</b>	<b>102,398,455</b>	<b>43.66%</b>	<b>2,917,546</b>	<b>0.57%</b>
<b>CAPITAL OUTLAY - NON BOND EXPENSES</b>								
Land Improvement	100,000	23,412	23.41%	439,404	392,876	89.41%	(369,464)	-66.00%
Building Alterations	130,000	205,287	157.91%	109,544	55,779	50.92%	149,508	106.99%
General Equipment	351,478	133,851	38.08%	592,157	1,525,224	257.57%	(1,391,373)	-219.49%
Instructional Equipment	861,619	68,707	7.97%	303,333	58,833	19.40%	9,874	-11.42%
Technology Equipment	200,000	51,140	25.57%	209,280	49,996	23.89%	1,144	1.68%
Student Activity	100,000	79,751	79.75%	96,799	63,506	65.61%	14,144	14.14%
Vehicles	240,000	80,653	33.61%	5,080	-	0.00%	80,653	33.61%
School Buses	1,278,159	1,010,196	79.04%	1,159,675	-	100.00%	1,010,196	-20.96%
<b>TOTAL CAPITAL OUTLAY</b>	<b>3,261,256</b>	<b>1,652,997</b>	<b>50.69%</b>	<b>2,915,272</b>	<b>2,146,214</b>	<b>73.62%</b>	<b>(493,217)</b>	<b>-22.93%</b>
<b>BOND ISSUE EXPENDITURES</b>	<b>17,511,421</b>	<b>12,219,785</b>	<b>69.78%</b>	<b>20,886,166</b>	<b>13,022,497</b>	<b>62.35%</b>	<b>(802,712)</b>	<b>7.43%</b>
<b>CAPITAL FUND - BUS LEASES</b>	<b>331,474</b>	<b>165,737</b>	<b>50.00%</b>	<b>328,980</b>	<b>211,523</b>	<b>64.30%</b>	<b>(45,786)</b>	<b>-14.30%</b>
<b>DEBT SERVICE - GO BONDS</b>	<b>25,433,648</b>	<b>3,462,582</b>	<b>13.61%</b>	<b>30,288,090</b>	<b>40,031,775</b>	<b>132.17%</b>	<b>(36,569,193)</b>	<b>-118.56%</b>
<b>GRAND TOTAL EXPENSES</b>	<b>284,615,138</b>	<b>122,817,102</b>	<b>43.15%</b>	<b>288,945,228</b>	<b>157,810,464</b>	<b>54.62%</b>	<b>(34,993,362)</b>	<b>-11.46%</b>

**FOOD SERVICE  
STATEMENT OF INCOME AND EXPENSE  
December 31, 2018**

		<u>BUDGET</u>	<u>CURRENT</u>	<u>ACTUAL</u>		<u>PRIOR YEAR</u>	<u>PRIOR</u>	<u>PRIOR YEAR</u>
		<u>FY19</u>	<u>MONTH</u>	<u>EXPENDITURES</u>	<u>% EXPENDED</u>	<u>ACTUAL FY18</u>	<u>YEAR TO DATE</u>	<u>YEAR</u>
				<u>YTD 12/31/2018</u>			<u>November 2017</u>	<u>% EXPENDED</u>
<b>RESERVE FOOD SERVICE SURPLUS</b>	-70.6%		\$257,471	\$108,211		\$135,350	\$368,531	
<b>INCOME</b>								
<b>LOCAL</b>	-1.9%	4,070,811	\$346,383	\$1,992,753	48.95%	\$4,209,014	\$2,030,550	48.24%
<b>STATE</b>	-1.5%	38,039	\$1,865	\$11,316	29.75%	\$23,694	\$11,484	48.47%
<b>FEDERAL</b>	-1.3%	2,112,600	\$169,256	\$1,016,700	48.13%	\$2,141,863	\$1,030,318	48.10%
<b>TOTAL INCOME</b>	-1.7%	6,221,450	\$517,503	\$3,020,769	48.55%	\$6,374,571	\$3,072,352	48.20%
<b>COST OF GOODS SOLD:</b>								
<b>Beginning Inventory</b>	26.3%		\$307,677	\$167,832		\$132,849	\$132,849	100.00%
<b>Add: Purchases-Food</b>	-11.2%	3,000,000	\$158,429	\$1,188,565	39.62%	\$2,590,905	\$1,338,990	51.68%
<b>Purchases-Other</b>	23.7%	236,280	\$31,529	\$132,639	56.14%	\$186,290	\$107,193	57.54%
<b>Goods Available</b>	-5.7%		\$497,635	\$1,489,036		\$2,910,044	\$1,579,032	54.26%
<b>Less: Ending Inventory</b>	19.9%		\$287,110	\$287,110		\$167,832	\$239,546	142.73%
<b>TOTAL COST OF GOODS</b>	-10.3%	3,236,280	\$210,525	\$1,201,926	37.14%	\$2,742,212	\$1,339,486	48.85%
<b>GROSS MARGIN</b>	5.0%	\$2,985,170	\$306,979	\$1,818,843	60.93%	\$3,632,360	\$1,732,866	47.71%
<b>OPERATION COSTS:</b>								
<b>Salaries</b>	1.0%	2,144,495	\$223,262	\$1,069,068	49.85%	\$2,359,241	\$1,058,026	44.85%
<b>Fringe Benefits</b>	3.5%	1,227,870	\$102,193	\$575,049	46.83%	\$1,176,834	\$555,540	47.21%
<b>Purchased Services</b>	11.2%	91,716	\$6,847	\$33,609	36.64%	\$60,690	\$30,230	49.81%
<b>Operating Supplies</b>	48.0%	68,955	\$6,034	\$56,287	81.63%	\$53,316	\$38,037	71.34%
<b>Credit for Services</b>	-22.3%	(100,000)	(\$16,036)	(\$49,109)	49.11%	(\$128,799)	(\$63,212)	49.08%
<b>Total Operating Costs</b>	4.1%	3,433,036	\$322,300	\$1,684,904	49.08%	\$3,521,281	\$1,618,621	45.97%
<b>INCOME (LOSS) FROM OPERATIONS</b>	17.2%	(447,866)	(\$15,321)	\$133,940		\$111,078	\$114,244	102.85%
<b>EQUIPMENT</b>		200,000	\$0	\$0	0.00%	\$138,218	\$89,217	64.55%
<b>RESERVE FOOD SERVICE SURPLUS</b>	-38.5%		\$242,150	\$242,150		\$108,211	\$393,558	363.70%

**Parkway School District  
Building Location Recap Report**

Fiscal Year 2019 Through Period 6    Run Date: 01-17-2019 @ 14:56:22

	<b>Budget</b>	<b>Expended</b>	<b>Encumbrances</b>	<b>Unexpended</b>
FERN RIDGE HIGH	16,400.00	12,441.15	1,898.85	2,060.00
CENTRAL HIGH	364,381.00	133,722.23	51,047.28	179,611.49
NORTH HIGH	288,008.00	134,259.90	19,746.37	134,001.73
WEST HIGH	338,231.00	181,512.77	29,328.69	127,389.54
SOUTH HIGH	478,348.00	192,524.55	49,773.98	236,049.47
SOUTHWEST MIDDLE	119,372.00	79,195.54	5,736.38	34,440.08
CENTRAL MIDDLE	192,990.00	94,552.88	10,097.01	88,340.11
NORTHEAST MIDDLE	170,385.00	122,599.19	3,975.85	43,809.96
SOUTH MIDDLE	134,712.00	71,999.33	-5,838.14	68,550.81
WEST MIDDLE	225,907.00	155,414.57	9,834.36	60,658.07
BARRETS ELEM.	78,502.00	33,797.82	1,839.63	42,864.55
BELLERIVE ELEM.	68,316.00	36,894.75	863.21	30,558.04
CARMAN TRAILS ELEM.	83,652.00	41,056.35	7,333.42	35,262.23
CLAYMONT ELEM.	74,442.00	50,790.61	1,404.80	22,246.59
CRAIG ELEM.	90,326.00	64,596.78	7,537.02	18,192.20
GREEN TRAILS ELEM.	69,845.00	40,524.90	338.88	28,981.22
HANNA WOODS ELEM.	74,485.00	50,003.49	1,363.32	23,118.19
HENRY ELEM.	106,539.00	39,974.82	1,546.83	65,017.35
HIGHCROFT ELEM.	62,387.00	23,957.09	2,093.50	36,336.41
MASON RIDGE ELEM.	83,275.00	26,798.90	9,327.38	47,148.72
MCKELVEY ELEM.	109,182.00	47,610.11	3,495.72	58,076.17
OAK BROOK ELEM.	97,298.00	51,097.68	2,330.99	43,869.33
PIERREMONT ELEM.	83,195.00	36,491.38	8,467.44	38,236.18
RIVER BEND ELEM.	76,023.00	48,790.59	2,887.49	24,344.92
ROSS ELEM.	57,357.00	42,033.40	546.49	14,777.11
SORRENTO SPRINGS ELEM.	56,590.00	22,953.81	4,033.97	29,602.22
SHENANDOAH VALLEY ELEM.	95,971.00	59,395.37	4,717.26	31,858.37
WREN HOLLOW ELEM.	62,266.00	45,720.15	1,582.97	14,962.88
<b>Grand Total for Funds 10-12</b>	<b>3,704,131.00</b>	<b>1,913,883.53</b>	<b>228,739.72</b>	<b>1,561,507.75</b>
<b>Grand Total for Fund 20</b>	<b>0.00</b>	<b>1,933.41</b>	<b>0.00</b>	<b>-1,933.41</b>
<b>Grand Total for Fund 30</b>	<b>0.00</b>	<b>0.00</b>	<b>0.00</b>	<b>0.00</b>
<b>Grand Total for Funds 40-41</b>	<b>54,254.00</b>	<b>24,893.17</b>	<b>8,571.23</b>	<b>20,789.60</b>
<b>Grand Total All</b>	<b>3,758,385.00</b>	<b>1,940,710.11</b>	<b>237,310.95</b>	<b>1,580,363.94</b>

**Parkway School District  
Consolidated Budget - Programs Recap Report**

Fiscal Year 2019 Through Period 6    Run Date: 01-17-2019 @ 14:57:34

	<b>Budget</b>	<b>Expended</b>	<b>Encumbrances</b>	<b>Unexpended</b>
<b>SPECIAL READING</b>	17,871.00	10,267.71	1,210.19	6,393.10
<b>COMM ARTS</b>	197,510.00	94,136.68	3,533.43	99,839.89
<b>MATHEMATICS</b>	92,242.00	36,633.65	1,122.38	54,485.97
<b>FINE ARTS</b>	393,345.00	197,869.22	17,850.77	177,625.01
<b>PHYSICAL EDUCATION</b>	64,811.00	37,632.30	2,471.48	24,707.22
<b>SCIENCE</b>	130,491.00	44,869.28	2,483.56	83,138.16
<b>SOCIAL STUDIES</b>	108,715.00	61,319.93	846.45	46,548.62
<b>INSTRUCTIONAL TECHNOLOGY</b>	117,682.00	59,255.69	6,507.26	51,919.05
<b>GUIDANCE</b>	31,006.00	4,783.68	0.00	26,222.32
<b>ART</b>	145,208.00	90,815.55	20,214.30	34,178.15
<b>BLDG ADMIN SERVICES</b>	2,233,800.00	935,503.93	118,896.43	1,179,399.64
<b>AUDIO VISUAL SERVICES</b>	13,180.00	2,026.52	-207.38	11,360.86
<b>BUSINESS EDUCATION</b>	48,677.00	14,571.45	0.00	34,105.55
<b>MODERN CLASSICAL LANG</b>	45,883.00	13,231.62	1,212.19	31,439.19
<b>FAMILY AND CONSUMER SC</b>	74,474.00	25,934.81	13,037.12	35,502.07
<b>INDUSTRIAL ARTS</b>	46,193.00	14,535.84	2,848.64	28,808.52
<b>STUDENT BODY ACT</b>	242,204.00	104,475.61	53,778.11	83,950.28
<b>DRIVERS EDUCATION</b>	920.00	85.88	0.00	834.12
<b>COOP VOC ED</b>	82,760.00	16,531.36	1,883.49	64,345.15
<b>UNIFIED STUDIES</b>	2,580.00	2,795.93	0.00	-215.93
<b>SPEECH</b>	28,911.00	8,526.41	0.00	20,384.59
<b>LIBRARY SVCS</b>	94,820.00	36,222.16	2,998.00	55,599.84
<b>HEALTH ED</b>	8,483.00	2,384.38	0.00	6,098.62
<b>EEE CAMP</b>	123,917.00	41,099.28	0.00	82,817.72
<b>GIFTED EDUCATION</b>	218,386.00	107,282.84	238.90	110,864.26
<b>DRUG FREE SCHOOL</b>	133,408.48	57,264.57	386.33	75,757.58
<b>ADC</b>	619,443.00	312,271.73	0.00	307,171.27
<b>SUMMER SCHOOL</b>	1,519,475.00	118,944.19	4,341.45	1,396,189.36
<b>INSTRUCTIONAL STAFFING</b>	134,616,254.86	56,192,300.66	0.00	78,423,954.20
<b>BLDG LEVEL STAFFING</b>	17,196,851.00	8,125,937.42	0.00	9,070,913.58
<b>SPECIAL SERVICES</b>	488,868.00	192,339.08	0.00	296,528.92
<b>ESOL</b>	17,778.00	6,747.56	68.75	10,961.69
<b>ATHLETICS</b>	1,009,781.00	482,005.50	163,173.72	364,601.78
<b>ADULT BASIC EDUCATION</b>	1,684,775.00	677,375.27	24,347.51	983,052.22
<b>SWIM CLUB</b>	850,596.00	356,296.22	43,478.00	450,821.78
<b>EARLY CHILDHOOD</b>	1,714,276.00	785,718.82	4,132.83	924,424.35
<b>PRESCHOOLS</b>	2,138,430.00	1,061,524.71	4,007.25	1,072,898.04
<b>PARK ROCK COMM ED</b>	105,000.00	14,725.96	0.00	90,274.04

**Parkway School District  
Consolidated Budget - Programs Recap Report**

Fiscal Year 2019 Through Period 6    Run Date: 01-17-2019 @ 14:57:34

	Budget	Expended	Encumbrances	Unexpended
STUDENT SERVICES	129,295.00	107,941.12	40,980.40	-19,626.52
PUPIL PERSONNEL	2,042,806.00	1,232,422.45	162,283.91	648,099.64
HEALTH SERVICES	2,739,358.00	1,265,831.39	5,531.50	1,467,995.11
GUIDANCE AND COUNSELING	197,117.00	109,127.24	0.00	87,989.76
SEB SUPPORT	11,100.00	2,097.62	191.48	8,810.90
TEACH LEARN ACCOUNTABILITY	4,627,098.00	1,788,633.38	70,810.16	2,767,654.46
PROFESSIONAL LEARNING	1,349,713.00	504,289.13	6,274.02	839,149.85
READING DIAGNOSTICS	204,345.75	76,799.16	0.00	127,546.59
EVALUATION	267,638.00	128,674.80	725.64	138,237.56
INSTRUC TECH LIBRARY MEDIA	952,836.00	544,117.47	32,948.67	375,769.86
STUDENT ASSESSMENT	409,367.00	97,443.22	48,433.00	263,490.78
PROGRESS MONITORING	817,164.00	231,817.62	0.00	585,346.38
BOARD OF EDUCATION	192,455.00	145,756.36	0.00	46,698.64
SUPERINTENDENT	481,887.00	226,144.52	0.00	255,742.48
DISTRICT DUES	154,100.00	99,495.23	40,808.22	13,796.55
LEGAL SERVICES	234,000.00	77,671.57	141,960.66	14,367.77
DEPUTY SUPERINTENDENT	347,512.00	142,948.58	552.40	204,011.02
ASST SUPER OF STUDENT SERVICES	365,053.00	145,718.65	0.00	219,334.35
CHIEF FINANCIAL OFFICER	312,444.00	150,044.50	401.57	161,997.93
COMMUNICATIONS	953,952.00	526,044.91	4,338.22	423,568.87
SAFETY SECURITY	1,368,648.00	592,104.48	469,927.00	306,616.52
SPECIAL PROJECTS	150,723.00	45,930.52	0.00	104,792.48
FINANCE	977,363.00	491,985.06	7,437.00	477,940.94
INTERNAL EQUIP FIN	456,360.00	228,645.99	244,661.83	-16,947.82
RISK MGMT	2,261,532.00	2,008,760.30	11,277.64	241,494.06
FOOD SERVICES	6,872,016.00	3,006,177.50	1,502,242.51	2,363,595.99
PURCHASING	395,962.00	189,965.21	500.00	205,496.79
PRINT SHOP	28,336.00	-7,422.12	5,847.27	29,910.85
SCHOOL STORES	440,123.00	175,446.37	112,016.29	152,660.34
WAREHOUSE	1,228,140.00	436,358.65	603.47	791,177.88
MAILROOM	94,053.00	36,859.28	2,141.32	55,052.40
TECHNOLOGY	7,243,781.00	4,197,383.08	140,526.26	2,905,871.66
HUMAN RESOURCES	1,143,585.00	540,665.98	9,462.19	593,456.83
TRANSPORTATION	6,918,901.00	3,775,273.16	154,544.87	2,989,082.97
SSD TRANSPORTATION	2,782,606.00	1,026,411.40	0.00	1,756,194.60
FACILITY OPERATIONS	8,198,278.00	3,638,043.65	124,262.46	4,435,971.89
FACILITY MAINTENANCE	5,209,547.00	2,263,500.21	425,049.58	2,520,997.21
GROUNDS MAINTENANCE	1,991,323.00	871,791.80	190,704.32	928,826.88



**Parkway School District  
Consolidated Budget - Programs Recap Report**

Fiscal Year 2019 Through Period 6 Run Date: 01-17-2019 @ 14:57:34

	<b>Budget</b>	<b>Expended</b>	<b>Encumbrances</b>	<b>Unexpended</b>
<b>PLANNING</b>	1,419,370.48	450,863.60	137,566.21	830,940.67
<b>ENVIRONMENTAL SVCS</b>	747,447.00	395,660.83	88,913.51	262,872.66
<b>FACILITY MANAGEMENT</b>	920,866.00	319,323.05	83,066.33	518,476.62
<b>SUSTAINABILITY</b>	5,325,222.00	2,040,902.41	1,796,085.62	1,488,233.97
<b>REBATE PROJECTS</b>	329,946.00	111,360.03	18,256.00	200,329.97
<b>2014 BOND</b>	22,496,421.00	12,219,964.73	3,618,015.54	6,658,440.73
<b>DEBT SERVICE</b>	25,450,648.00	3,462,581.52	4,711.00	21,983,355.48
<b>STATE GRANTS</b>	372,071.50	87,959.05	0.00	284,112.45
<b>FEDERAL GRANTS</b>	2,513,148.00	966,789.59	30,025.81	1,516,332.60
<b>LOCAL GRANTS</b>	121,835.11	83,781.31	5.03	38,048.77
<b>Grand Total for Funds 10-12</b>	<b>85,135,380.59</b>	<b>39,586,840.05</b>	<b>6,149,598.74</b>	<b>39,398,941.80</b>
<b>Grand Total for Fund 20</b>	<b>154,200,715.59</b>	<b>64,597,960.13</b>	<b>0.00</b>	<b>89,602,755.46</b>
<b>Grand Total for Fund 30</b>	<b>25,450,648.00</b>	<b>3,462,581.52</b>	<b>4,711.00</b>	<b>21,983,355.48</b>
<b>Grand Total for Funds 40-41</b>	<b>26,119,754.00</b>	<b>13,958,947.26</b>	<b>4,074,640.33</b>	<b>8,086,166.41</b>
<b>Grand Total All</b>	<b>290,906,498.18</b>	<b>121,606,328.96</b>	<b>10,228,950.07</b>	<b>159,071,219.15</b>

## GLOSSARY

ACCOUNTS PAYABLE - Unpaid amounts currently owed to vendors for goods and services provided.

ACCOUNTS RECEIVABLE - Revenues earned but not yet received by the District.

BONDS AND INTEREST PAYABLE - Amount of bond principal payable in future years and interest payable in the next year.

CONSTRUCTION IN PROGRESS - Amounts expended to date on construction projects not completed. When completed, this account is reduced by the total cost of the completed projects.

ENCUMBRANCES - Obligations in the form of purchase orders, contracts, salary commitments, etc. for which a budgeted appropriation has been made.

EQUITY IN FIXED ASSETS - Represents the appropriation of funds over a number of years to acquire land, buildings / improvements, and equipment less the amount of bond liabilities used to finance the asset purchases.

FUND BALANCE - The excess of assets over liabilities, which represent the “net worth” of a fund

FUNDS - The four basic funds and their purposes are:

Capital Projects - Only capital equipment and building additions / alterations can be charged to this fund. Primary sources of revenue are property/ delinquent taxes and investment income.

2014 Bond Issue - Only expenditures and revenues related to the 2014 bond approval is reported in this fund.

Debt Service - Bond principal, interest and fees associated with the issue and redemption of bonds are the only expenses chargeable to this fund. Primary sources of revenue are property / delinquent taxes and investment income.

General (Incidental) - Expenses not specifically chargeable to other funds are charged to this fund. Primary sources of revenue are property / delinquent taxes,

sales tax, investment income, minimum guarantee, VST, textbook, transportation and food service.

Special Revenue (Teachers) - Only salaries for certified personnel and the cost medical / dental / vision / life insurance can be charged to this fund. Primary sources of revenue are property / delinquent taxes, investment income, state utility tax, minimum guarantee and VST.

INVENTORIES - Value of consumables purchased for future use.

LIABILITY FOR COMPENSATED ABSENCES - Total unpaid amount of vacation and compensation time for active employees. These are paid out as taken throughout the year and recorded as salary.

LIABILITY FOR EARLY RETIREMENT - Total cost related to payments of retirees who utilized the early retirement incentives.

PREPAID EXPENSES - Services paid for in advance of use (e.g. insurance).

RESERVE - Portion of the fund balance which is segregated for a future use and, therefore, not available for future appropriation.

RESTRICTED RESERVE - Balances in the General Fund or Capital Projects Fund restricted as to the use (e.g. future medical / dental benefits) or unspent bond issue funds.

UNREALIZED REVENUES - Revenues budgeted but not yet realized.



## FOR MONTH OF: DECEMBER - FY19

Attached is a list (alphabetical by vendor) of purchase orders and order for payments \$500 to \$15,000 and \$15,000 + which the administration has approved in accordance with Policy #DJEBP

Reports per DIC.BP

c: Patty Bedborough, Brian Whittle, Erik Lueders

ORDER FOR PAYMENT  
 \$500 - \$15,000  
 DECEMBER - FY19

VENDOR NAME	DOCUMENT	INVOICE	WARRANT	OBJECT	CHECK NO	AMOUNT
AMBUSH SOCCER CLUB,	339883	AMBUSH113018	EARLY	6411	484336	\$ 710.00
BERNSTEIN, DENISE	342549	PART B REIM-2018	REG	6241	0	\$ 861.00
DUNNINGTON, LESLIE	341651	PART B REIM-2018	REG	6241	484713	\$ 938.00
GENESIS BANQUET & CA	342146	17002	REG	6411	0	\$ 550.00
HAACK, THOMAS	341638	SPARK COMP 12-11	REG	6411	484779	\$ 500.00
HAPPEL, DEBRA	342571	PART B REIM	REG	6241	0	\$ 1,474.00
HEAVY DUTY TOOLS INC	342490	1093687	REG	6411	0	\$ 661.00
HP INC	342539	7750392798	EARLY	6412	0	\$ 525.69
KOHNEN, CAROL	342312	PART B REIMBURSEMENT	EARLY	6241	0	\$ 804.00
LANGENDORF SUPPLY CO	341122	D79219-IN	REG	6411	484753	\$ 584.00
MANCHESTER MUSIC	341736	001283	REG	6332	485036	\$ 530.00
MENTAL HEALTH AMERIC	342492	006189	REG	6391	0	\$ 600.00
MIDWEST SHEET MUSIC	341563	104770	REG	6431	485045	\$ 670.50
MJP PROMOTIONS LLC	341086	5423	REG	6411	484767	\$ 602.81
MO COTTON EXCHANGE	341764	108494	REG	6411	485047	\$ 637.50
MOZINGO MUSIC	341743	2292146	EARLY	6411	484870	\$ 977.00
SPORTSPRINT INC	341089	354181	REG	6411	484793	\$ 792.81
ST. LOUIS SPORTSWEAR	341819	53056	REG	6411	0	\$ 526.25
STEWART, DIANA	342298	REIMBURSE PART B	EARLY	6241	0	\$ 536.00
STEWART, ROBERT J	342317	REF. MEDICARE PART B	EARLY	6241	0	\$ 938.00
TAYLOR, MERLIN	342294	REIMBURSE PART B	EARLY	6241	0	\$ 1,608.00
TED DREWES	339373	68576	REG	6411	484536	\$ 692.00
TSA TEACHNOL STUD	341810	1004354	REG	6398	485087	\$ 720.00
WINNING STREAK	339419	105624	EARLY	6411	484677	\$ 508.00
WINNING STREAK	340027	103178	EARLY	6411	484677	\$ 537.00
					<b>TOTAL:</b>	<b>\$ 18,483.56</b>

## PURCHASE ORDERS

\$500 - \$15,000

December FY 19

PO#	Vendor Name	PO Date	Order Amount	Balance	Status	1st GL Account
54190147	AALCO MANUFACTU	12/03/2018	\$ 875.00	\$ -	0 - Closed	11149334-6411-07240
58190164	AGI SOLUTIONS,I	12/10/2018	\$ 643.96	\$ 643.96	8 - Printed	11149365-6411-08648
32190006	AMAZON	12/06/2018	\$ 500.00	\$ 500.00	8 - Printed	10213119-6411
69190005	AMAZON	12/07/2018	\$ 750.00	\$ 750.00	8 - Printed	10213065-6412
62190327	AMAZON	12/20/2018	\$ 900.00	\$ 900.00	8 - Printed	10113052-6411
74190007	AMAZON	12/20/2018	\$ 3,499.00	\$ 3,499.00	8 - Printed	10223544-6411
1190033	AMERICAN HEART	12/12/2018	\$ 1,073.00	\$ -	0 - Closed	11149020-6411-07992
62190310	AMP UP ENTERTAI	12/06/2018	\$ 3,000.00	\$ -	0 - Closed	10398220-6339-03105
85190285	ANIXTER INC	12/07/2018	\$ 2,760.28	\$ 2,760.28	8 - Printed	40255023-6543
63190223	AOS-ALEXANDER O	12/18/2018	\$ 8,440.00	\$ -	0 - Closed	10235010-6316
5190030	ARTOME LLC	12/17/2018	\$ 2,090.00	\$ -	0 - Closed	10111007-6411
63190210	ASSETGENIE, INC	12/03/2018	\$ 519.00	\$ -	0 - Closed	10-1617
63190233	ASSETGENIE, INC	12/20/2018	\$ 560.00	\$ 560.00	8 - Printed	10111AQR-6412
19190038	BE MINDFUL	12/12/2018	\$ 700.00	\$ -	0 - Closed	10241674-6312
63190216	BEST BUY BUSINE	12/06/2018	\$ 2,759.88	\$ -	0 - Closed	10221189-6412
48190193	BIRKEL ELECTRIC	12/14/2018	\$ 13,370.00	\$ -	0 - Closed	40406108-6543-00060
14190031	BRAINPOP	12/18/2018	\$ 1,550.00	\$ 1,550.00	8 - Printed	10111AFO-6412
40190025	BROADCAST SUPPL	12/17/2018	\$ 2,326.27	\$ 2,326.27	8 - Printed	11149265-6411-07696
63190212	CDW-G	12/06/2018	\$ 2,574.00	\$ -	0 - Closed	10235330-6412
83190086	CENGAGE LEARNIN	12/20/2018	\$ 4,124.59	\$ 4,124.59	8 - Printed	10223182-6412
62190314	CENGAGE LEARNIN	12/13/2018	\$ 7,479.51	\$ 7,479.51	8 - Printed	10138329-6412-42701
50190106	CHRIS CAKES OF	12/12/2018	\$ 1,354.54	\$ 1,354.54	8 - Printed	11149309-6411-09360
48190192	CI SELECT	12/14/2018	\$ 10,600.00	\$ 10,600.00	8 - Printed	40406135-6521-00065
50190107	CNR BASKETBALL	12/12/2018	\$ 3,900.00	\$ -	0 - Closed	11149312-6391-09394
54190146	DAKTRONICS INC	12/03/2018	\$ 515.00	\$ -	0 - Closed	102410AX-6339
85190289	DRAPERIES BY MO	12/10/2018	\$ 1,218.00	\$ 1,218.00	8 - Printed	102550JF-6411
48190190	DRAPERIES BY MO	12/10/2018	\$ 5,500.00	\$ 5,500.00	8 - Printed	10241900-6391
82190027	EDUCATIONPLUS	12/14/2018	\$ 5,000.00	\$ 5,000.00	8 - Printed	10255AEF-6411
71190015	ELLIOTT DATA SY	12/17/2018	\$ 4,300.00	\$ 4,300.00	8 - Printed	10049320-6411
76190012	EMERALD DATA SO	12/06/2018	\$ 9,000.00	\$ -	0 - Closed	10234420-6316
85190284	ENERGY PETROLEU	12/06/2018	\$ 3,297.77	\$ -	0 - Closed	10255AJS-6486
85190283	ENERGY PETROLEU	12/06/2018	\$ 3,506.32	\$ -	0 - Closed	10255AJS-6486
85190294	F J JURCIC CO	12/17/2018	\$ 2,925.76	\$ 2,925.76	8 - Printed	40251060-6521
83190080	FOLLETT SCHOOL	12/13/2018	\$ 607.05	\$ 607.05	8 - Printed	10223880-6441
83190082	FOLLETT SCHOOL	12/13/2018	\$ 996.58	\$ 996.58	8 - Printed	10223790-6441
83190076	FOLLETT SCHOOL	12/04/2018	\$ 1,202.29	\$ 1,202.29	8 - Printed	10223760-6441
83190079	FOLLETT SCHOOL	12/06/2018	\$ 1,239.17	\$ 1,239.17	8 - Printed	10223690-6441
62190313	FOLLETT SCHOOL	12/13/2018	\$ 2,008.46	\$ 2,008.46	8 - Printed	10113172-6431
83190081	FOLLETT SCHOOL	12/13/2018	\$ 2,811.39	\$ 2,811.39	8 - Printed	10223770-6441
83190077	FOLLETT SCHOOL	12/04/2018	\$ 6,056.82	\$ 6,056.82	8 - Printed	10223720-6441
63190218	FORECAST 5 ANAL	12/12/2018	\$ 10,000.00	\$ -	0 - Closed	10235150-6412
12190009	FRANKLIN COVEY	12/06/2018	\$ 7,500.00	\$ -	0 - Closed	10221313-6371
85190282	FULL COMPASS	12/04/2018	\$ 1,461.52	\$ 1,461.52	8 - Printed	10241875-6411
19190039	GIFTED RESOURCE	12/12/2018	\$ 810.00	\$ -	0 - Closed	11149760-6398-08072
23190036	GOPHER SPORT	12/03/2018	\$ 760.75	\$ 760.75	8 - Printed	10111AQT-6411
63190219	GRAYBAR ELEC CO	12/12/2018	\$ 1,363.09	\$ 13.63	8 - Printed	10235370-6412
63190215	HEWLETT-PACKARD	12/06/2018	\$ 1,474.00	\$ -	0 - Closed	40255330-6543
63190234	HEWLETT-PACKARD	12/20/2018	\$ 1,474.00	\$ 1,474.00	8 - Printed	40005770-6543

PO#	Vendor Name	PO Date	Order Amount	Balance	Status	1st GL Account
48190188	HONEYWELL INTER	12/06/2018	\$ 11,359.89	\$ -	0 - Closed	40406126-6521-00019
48190187	HONEYWELL INTER	12/06/2018	\$ 12,391.02	\$ -	0 - Closed	40406126-6521-00019
6190021	J COLE INC.	12/13/2018	\$ 1,044.00	\$ -	0 - Closed	10111486-6334
54190148	JOSTENS INC	12/03/2018	\$ 530.00	\$ 530.00	8 - Printed	10141490-6411
56190150	JOSTENS INC	12/06/2018	\$ 6,102.10	\$ 6,102.10	8 - Printed	11149342-6411-08048
54190155	KARBMAN, VALENT	12/12/2018	\$ 1,040.00	\$ -	0 - Closed	10111BJO-6391
73190071	KELLY PRESS	12/21/2018	\$ 750.00	\$ -	0 - Closed	11149156-6411-08363
73190069	KELLY PRESS	12/20/2018	\$ 750.00	\$ -	0 - Closed	11149156-6411-08363
97190100	KIESEL COMPANY	12/14/2018	\$ 13,985.63	\$ 13,985.63	8 - Printed	10051380-6486
62190311	KINGERY PRINTIN	12/12/2018	\$ 4,341.45	\$ 4,341.45	8 - Printed	10014800-6363-04400
58190167	KRUEGER POTTERY	12/14/2018	\$ 3,500.00	\$ 3,500.00	8 - Printed	10111BRN-6411
73190068	LINDBERGH SCHOO	12/12/2018	\$ 1,180.00	\$ -	0 - Closed	10142450-6391 *
62190315	LOGAN UNIVERSIT	12/13/2018	\$ 1,475.00	\$ -	0 - Closed	10111318-6339
62190316	LOGAN UNIVERSIT	12/13/2018	\$ 2,200.00	\$ -	0 - Closed	10111324-6339
54190153	MASA SPORTING G	12/07/2018	\$ 1,423.00	\$ 1,423.00	8 - Printed	11149334-6411-09846
58190161	MEP INC.	12/03/2018	\$ 1,114.04	\$ 1,114.04	8 - Printed	10111BRW-6411
48190189	MERLO PLUMBING	12/06/2018	\$ 622.00	\$ 622.00	8 - Printed	40406166-6521-00077
62190322	MID-AMERICAN CO	12/18/2018	\$ 6,056.00	\$ -	0 - Closed	10251116-6342
63190225	MINNESOTA MEMOR	12/18/2018	\$ 1,334.75	\$ 1,334.75	8 - Printed	10-1617
63190220	MINNESOTA MEMOR	12/12/2018	\$ 1,559.85	\$ 1,559.85	8 - Printed	10-1617
63190224	MINNESOTA MEMOR	12/18/2018	\$ 1,999.80	\$ 1,999.80	8 - Printed	10-1617
63190214	MINNESOTA MEMOR	12/06/2018	\$ 3,499.65	\$ 3,499.65	8 - Printed	10-1617
39190021	MO DEPT OF NATU	12/06/2018	\$ 850.00	\$ -	0 - Closed	102550UJ-6332
46190042	MO STATE THESPI	12/10/2018	\$ 865.00	\$ -	0 - Closed	11149298-6398-07696
63190211	MOBILE DEFENDER	12/03/2018	\$ 899.70	\$ -	0 - Closed	10-1617
71190014	MODERN LITHO IN	12/14/2018	\$ 2,337.70	\$ 2,337.70	8 - Printed	10234225-6363
50190105	MSHSAA	12/07/2018	\$ 1,793.80	\$ -	0 - Closed	11149313-6411-07240
62190307	MUSO, PETER	12/04/2018	\$ 1,896.77	\$ -	0 - Closed	10228113-6411-02160
62190308	MUSO, PETER	12/04/2018	\$ 2,425.92	\$ -	0 - Closed	10228103-6319-02160
92190014	OAKWOOD SYSTEMS	12/12/2018	\$ 3,400.00	\$ 3,400.00	8 - Printed	10162710-6412-02000
15190036	OFFICE ESSENTIA	12/03/2018	\$ 525.00	\$ 387.32	8 - Printed	10111AGV-6411
12190010	OFFICE ESSENTIA	12/06/2018	\$ 1,000.00	\$ 1,000.00	8 - Printed	10111AEK-6411
20190056	OFFICE ESSENTIA	12/04/2018	\$ 1,183.29	\$ 1,183.29	8 - Printed	10111AMI-6411
5190027	OFFICE ESSENTIA	12/07/2018	\$ 5,272.92	\$ 5,272.92	8 - Printed	10111008-6411
54190157	PALEN MUSIC CEN	12/14/2018	\$ 500.00	\$ 84.00	8 - Printed	10111BJN-6332
79190009	PROJECT CONSTRU	12/20/2018	\$ 4,000.00	\$ 4,000.00	8 - Printed	10352470-6312-04500
74190008	PROJECT LEAD TH	12/20/2018	\$ 1,200.00	\$ 1,200.00	8 - Printed	10223075-6319
63190230	RADIO COMM CO.	12/18/2018	\$ 13,000.00	\$ 12,662.35	8 - Printed	10235290-6361
58190171	RIDDELL ALL AME	12/14/2018	\$ 2,571.20	\$ 2,571.20	8 - Printed	10141660-6411
63190236	ROTH, WILLIAM J	12/21/2018	\$ 8,928.00	\$ 8,928.00	8 - Printed	40406150-6543-00088
21190033	SCHOOL OUTLET	12/06/2018	\$ 606.50	\$ 606.50	8 - Printed	10111ANP-6411
43190042	SCHOOL SPECIALT	12/12/2018	\$ 715.63	\$ 715.63	8 - Printed	10111AX0-6411
12190011	SCHOOL SPECIALT	12/12/2018	\$ 907.16	\$ -	0 - Closed	10241243-6411
62190321	SHEPARD, LISA	12/13/2018	\$ 684.00	\$ 684.00	8 - Printed	10223327-6312
62190309	SIGN MEDIA, INC	12/04/2018	\$ 3,850.40	\$ -	0 - Closed	10111413-6431 *
85190287	SITEONE LANDSCA	12/07/2018	\$ 1,372.80	\$ 122.10	8 - Printed	10255AIO-6411
46190041	SIX FLAGS	12/06/2018	\$ 7,270.00	\$ 7,270.00	8 - Printed	11149298-6398-07856
1190034	SOUTHWEST STRIN	12/12/2018	\$ 599.08	\$ 599.08	8 - Printed	10111090-6411
85190288	SPHERA SOLUTION	12/07/2018	\$ 1,919.15	\$ 1,919.15	8 - Printed	10255AJN-6412
45190015	SPORTSPRINT INC	12/10/2018	\$ 1,654.65	\$ 1,654.65	8 - Printed	11149288-6411-09208
1190035	ST. LOUIS AMBUS	12/18/2018	\$ 1,910.00	\$ -	0 - Closed	11149020-6411-08056
62190317	ST. LOUIS CNTY	12/13/2018	\$ 1,228.80	\$ -	0 - Closed	10253110-6342

PO#	Vendor Name	PO Date	Order Amount	Balance	Status	1st GL Account
97190099	ST. LOUIS CNTY	12/12/2018	\$ 6,000.00	\$ 3,374.00	8 - Printed	10255160-6342
62190323	ST. LOUIS CNTY	12/18/2018	\$ 12,500.00	\$ 12,500.00	8 - Printed	10253110-6342
40190026	ST. LOUIS SPORT	12/17/2018	\$ 1,267.25	\$ -	0 - Closed	11149265-6411-08432
63190221	STAPLES	12/12/2018	\$ 567.15	\$ 567.15	8 - Printed	10111BEI-6412
63190217	STAPLES	12/06/2018	\$ 945.25	\$ -	0 - Closed	10111BEI-6412
63190229	STAPLES	12/18/2018	\$ 4,495.40	\$ 4,495.40	8 - Printed	10162710-6412-02001
97190096	SUPERIOR ACQUIS	12/03/2018	\$ 5,486.67	\$ 5,486.67	8 - Printed	40005780-6541
85190291	THERMAL MECHANI	12/12/2018	\$ 3,400.00	\$ 3,400.00	8 - Printed	102550FG-6332
50190104	TJ'S PIZZA	12/06/2018	\$ 1,247.40	\$ -	0 - Closed	11149308-6411-07508
58190170	TKO DJ'S	12/14/2018	\$ 1,749.00	\$ 1,749.00	8 - Printed	11149364-6391-08808
56190151	TOLEDO PHYSICAL	12/06/2018	\$ 991.45	\$ 991.45	8 - Printed	10111BMW-6411
85190286	TRI-DIM FILTER	12/07/2018	\$ 10,000.00	\$ 9,811.19	8 - Printed	102550DX-6411
97190094	TRUCK CENTERS I	12/03/2018	\$ 2,751.38	\$ 2,751.38	8 - Printed	10255751-6411-04150
62190320	UNITED CAB	12/13/2018	\$ 963.00	\$ -	0 - Closed	10253110-6342
62190324	UNITED CAB	12/18/2018	\$ 11,500.00	\$ 11,500.00	8 - Printed	10253110-6342
58190165	USA TOURS, INC	12/12/2018	\$ 1,500.00	\$ 1,500.00	8 - Printed	11259640-6342-09424
58190162	USA TOURS, INC	12/04/2018	\$ 4,940.00	\$ 4,940.00	8 - Printed	11259640-6342-07464
62190325	VANDALIA BUS LI	12/18/2018	\$ 1,995.00	\$ -	0 - Closed	10251143-6342
62190319	VENTO MUSIC AND	12/13/2018	\$ 2,000.00	\$ -	0 - Closed	10111BUE-6431
62190328	VERNIER SOFTWAR	12/20/2018	\$ 1,098.28	\$ 1,098.28	8 - Printed	10113166-6411
50190109	VIVIANO'S CHEST	12/18/2018	\$ 1,834.57	\$ -	0 - Closed	11149309-6411-07992
97190095	WARNER COMMUNIC	12/03/2018	\$ 1,750.00	\$ 1,750.00	8 - Printed	10051410-6411
58190168	WEINHARDT PARTY	12/14/2018	\$ 737.50	\$ 737.50	8 - Printed	102410DB-6391
63190231	WEVIDEO	12/18/2018	\$ 2,407.50	\$ -	0 - Closed	10225050-6412
50190103	WINNING STREAK	12/06/2018	\$ 1,160.00	\$ -	0 - Closed	11149313-6411-07240
54190154	WINNING STREAK	12/07/2018	\$ 2,116.25	\$ -	0 - Closed	11149334-6411-09394
97190097	WOODY'S MUNICIP	12/07/2018	\$ 4,192.00	\$ -	0 - Closed	40005770-6541
<b>TOTAL:</b>			<b>\$ 394,597.70</b>			



**\$15,000+**  
**December FY19**

<b>PO#</b>	<b>Vendor Name</b>	<b>PO Date</b>	<b>Order Amount</b>	<b>Balance</b>	<b>Status</b>	<b>1st GL Account</b>
45190014	BOB ROGERS TRAV	12/10/2018	\$ 16,500.00	\$ 9,000.00	8 - Printed	11149770-6398-08512
61190023	DUTCH HOLLOW SE	12/20/2018	\$ 26,644.80	\$ 26,644.80	8 - Printed	10-1615
97190098	ENERGY PETROLEU	12/10/2018	\$ 15,347.55	\$ -	0 - Closed	10051380-6486
85190295	INDUSTRIAL SOAP	12/17/2018	\$ 15,000.00	\$ 15,000.00	8 - Printed	10255688-6332
60190012	M.U.S.I.C.	12/12/2018	\$ 2,363,543.00	\$ -	0 - Closed	10255324-6351-05000
85190292	RAMAIR INC.	12/12/2018	\$ 20,000.00	\$ 20,000.00	8 - Printed	102550DX-6411
61190022	RBO, INC	12/03/2018	\$ 95,380.00	\$ 95,380.00	8 - Printed	40255320-6544
85190290	SCHILLER'S IMAG	12/12/2018	\$ 19,470.00	\$ 19,470.00	8 - Printed	10225400-6412-04604
62190318	SPECIAL SCHOOL	12/13/2018	\$ 20,000.00	\$ -	0 - Closed	10138326-6391-42701
65190022	UNITED CAB	12/14/2018	\$ 150,000.00	\$ 98,028.00	8 - Printed	10052030-6341
85190293	ZIGLIN SIGNS IN	12/14/2018	\$ 26,732.00	\$ 26,732.00	8 - Printed	41149720-6541-08816
<b>TOTAL:</b>			<b>\$ 2,768,617.35</b>			

## SPOT MARKET REPORT - DECEMBER 2018

Purchase Order #	Date	Vendor #	Vendor Name	Comm. Code	QTY	UOM	Unit Price	Description	Object	Account	Amt
61190001	07/05/18	631777	COSTCO	202				8.5 x 11 WHITE COPY PAPER - 30% RECYCLED PAPER - GP SPECTRUM			
61190001					840	EACH	\$ 29.74		1615	\$	24,981.60
61190001			OFFICE ESSENTIALS								
61190012	08/15/18	809084	INCORPORATED	202				8.5 x 11 WHITE COPY PAPER - 30% RECYCLED PAPER - UNIVERSAL			
61190012					840	EACH	\$ 30.50		1615	\$	25,620.00
61190012			OFFICE ESSENTIALS								
61190016	09/14/18	809084	INCORPORATED	202				8.5 x 11 WHITE COPY PAPER - 30% RECYCLED PAPER - UNIVERSAL			
61190016					840	EACH	\$ 31.90		1615	\$	26,796.00
61190016			CONTRACT PAPER GROUP, INC								
61190018	10/15/18	622854	INC	202				8.5 x 11 WHITE COPY PAPER - 30% RECYCLED PAPER - GEORGIA PACIFIC SPECTRUM			
61190018					840	EACH	\$ 31.89		1615	\$	26,787.60
61190018			DUTCH HOLLOW SERVICES & SUPPLIES INC.								
61190023	12/20/18	632285		202				8.5 x 11 WHITE COPY PAPER - 30% RECYCLED PAPER - UNIVERSAL #20030			
61190023					840	EACH	\$ 31.72		1615	\$	26,644.80
85190141	07/31/18	615999	FROESEL OIL CO, INC	400							
85190141					204	EACH	\$ 2.25	RFG REG UNLEADED			
85190141									6486	\$	458.80
85190141					410	EACH	\$ 2.36	ULS #2 DIESEL			
85190141									6486	\$	966.78
85190141					1	EACH	\$ 301.44	STATE AND FEDERAL TAXES AND FEES			
85190141									6486	\$	301.44
85190141					1097	EACH	\$ 2.25	RFG REG UNLEADED			
85190141									6486	\$	2,467.15
85190171	08/17/18	615999	FROESEL OIL CO, INC	400							
85190171					591	EACH	\$ 2.12	RFG REG UNLEADED			
85190171									6486	\$	1,251.74
85190171					384	EACH	\$ 2.23	ULS #2 DIESEL			
85190171									6486	\$	855.94
85190171					1	EACH	\$ 222.88	STATE AND FEDERAL TAXES AND FEES			
85190171									6486	\$	222.88

85190171					250	EACH	\$	2.12	RFG REG UNLEADED			
85190171										6486	\$	529.50
85190171					40	EACH	\$	2.23	ULS#2 DIESEL			
85190171										6486	\$	89.16
85190194	08/28/18	615999	FROESEL OIL CO, INC	400								
85190194					1570	EACH	\$	2.16	RFG REG UNLEADED			
85190194										6486	\$	3,388.06
85190194					330	EACH	\$	2.24	ULS #2 DIESEL			
85190194										6486	\$	738.87
85190194					1	EACH	\$	410.61	STATE AND FEDERAL TAXES AND FEES			
85190194										6486	\$	410.61
85190194					431	EACH	\$	2.16	RFG REG UNLEADED			
85190194										6486	\$	930.10
85190199	09/04/18	615999	FROESEL OIL CO, INC	400								
85190199					1650	EACH	\$	2.13	RFG REG UNLEADED			
85190199										6486	\$	3,512.69
85190199					375	EACH	\$	2.25	ULS #2 DIESEL			
85190199										6486	\$	844.76
85190199					1	EACH	\$	435.98	STATE AND FEDERAL TAXES AND FEES			
85190199										6486	\$	435.98
85190199					450	EACH	\$	2.13	RFG REG UNLEADED			
85190199										6486	\$	958.01
85190218	09/12/18	615999	FROESEL OIL CO, INC	400								
85190218					1773	EACH	\$	2.04	RFG REG UNLEADED			
85190218										6486	\$	3,624.01
85190218					340	EACH	\$	2.34	ULS #2 DIESEL			
85190218										6486	\$	794.92
85190218					1	EACH	\$	447.15	STATE AND FEDERAL TAXES AND FEES			
85190218										6486	\$	447.15
85190218					430	EACH	\$	2.04	RFG REG UNLEADED			
85190218										6486	\$	878.92
85190231	09/25/18	615999	FROESEL OIL CO, INC	400								
85190231					1299	EACH	\$	2.10	RFG REG UNLEADED			
85190231										6486	\$	2,726.60
85190231					342	EACH	\$	2.39	ULS #2 DIESEL			
85190231										6486	\$	817.04
85190231					1	EACH	\$	359.89	STATE AND FEDERAL TAXES AND FEES			
85190231										6486	\$	359.89
85190231					402	EACH	\$	2.10	RFG REG UNLEADED			
85190231										6486	\$	843.80
85190240	10/10/18	615999	FROESEL OIL CO, INC	400								
85190240					1463	EACH	\$	2.18	RFG REG UNLEADED			
85190240										6486	\$	3,187.88
85190240					371	EACH	\$	2.44	ULS #2 DIESEL			
85190240										6486	\$	904.87

85190240				1	EACH	\$	398.81	STATE AND FEDERAL TAXES AND FEES			
85190240									6486	\$	398.81
85190240				430	EACH	\$	2.18	RFG REG UNLEADED			
85190240									6486	\$	936.97
			ENERGY PETROLEUM								
85190265	11/08/18	642477	COMPANY	400							
85190265				1671	EACH	\$	2.13	NO LEAD 87 OCT RFG			
85190265									6486	\$	3,559.66
85190265				430.1	EACH	\$	2.13	NO LEAD 87 OCT RFG			
85190265									6486	\$	916.11
85190265				260	EACH	\$	2.55	#2 ULTRA LS DIESEL			
85190265									6486	\$	663.00
85190265				1	EACH	\$	294.34	FOR INVOICE 647834 FEDERAL AND STATE TAXES			
85190265									6486	\$	294.34
85190265				1	EACH	\$	75.76	FOR INVOICE 647836 FEDERAL AND STATE TAXES			
85190265									6486	\$	75.76
85190265				1	EACH	\$	45.85	FOR INVOICE 651276 FEDERAL AND STATE TAXES			
85190265									6486	\$	45.85
			ENERGY PETROLEUM								
85190271	11/20/18	642477	COMPANY	400							
85190271				430	EACH	\$	1.96	NO LEAD 87 OCT RFG			
85190271									6486	\$	842.80
85190271				2270	EACH	\$	1.96	NO LEAD 87 OCT RFG			
85190271									6486	\$	4,449.20
85190271				230	EACH	\$	2.45	#2 ULTRA LS DIESEL			
85190271									6486	\$	563.50
85190271				1	EACH	\$	75.74	FOR INVOICE 647834 FEDERAL AND STATE TAXES			
85190271									6486	\$	75.74
85190271				1	EACH	\$	399.82	FOR INVOICE 647836 FEDERAL AND STATE TAXES			
85190271									6486	\$	399.82
85190271				1	EACH	\$	40.56	FOR INVOICE 651276 FEDERAL AND STATE TAXES			
85190271									6486	\$	40.56
			ENERGY PETROLEUM								
85190283	12/06/18	642477	COMPANY	400							
85190283				425.1	EACH	\$	1.76	NO LEAD 87 OCT RFG			
85190283									6486	\$	748.18
85190283				1408	EACH	\$	1.73	NO LEAD 87 OCT RFG			
85190283									6486	\$	2,435.32
85190283				1	EACH	\$	74.88	FOR #6193473 FEDERAL AND STATE TAXES			
85190283									6486	\$	74.88

85190283				1	EACH	\$	247.94	FOR #6193474 FEDERAL AND STATE TAXES			
85190283									6486	\$	247.94
			ENERGY PETROLEUM								
85190284	12/06/18	642477	COMPANY	400							
85190284				908	EACH	\$	1.74	NO LEAD 87 OCT RFG			
85190284									6486	\$	1,579.92
85190284				290	EACH	\$	1.74	NO LEAD 87 OCT RFG			
85190284									6486	\$	504.60
85190284				402	EACH	\$	2.32	#2 ULTRA PREM LS DIESEL			
85190284									6486	\$	931.35
85190284				1	EACH	\$	159.93	FOR #1451221 FEDERAL AND STATE TAXES			
85190284									6486	\$	159.93
85190284				1	EACH	\$	51.08	FOR #1451222 FEDERAL AND STATE TAXES			
85190284									6486	\$	51.08
85190284				1	EACH	\$	70.89	FOR #1451220 FEDERAL AND STATE TAXES			
85190284									6486	\$	70.89
97190059	09/12/18	615999	FROESEL OIL CO, INC	500							
								CONVENIENT PURCHASE ORDER FOR THE PURCHASE OF PREMIUM ULTRA LOW SULFUR #2 DIESEL FUEL FOR SCHOOL BUSES. BID #19P-30			
97190059				7500	EACH	\$	2.33				
97190059									6486	\$	17,467.50
97190059				7500	EACH	\$	0.00	FEDERAL OIL SPILL FEE			
97190059									6486	\$	16.05
97190059				7500	EACH	\$	0.00	MO AGI TAX PER GAL			
97190059									6486	\$	7.50
97190059				7500	EACH	\$	0.17	MO STATE TAX PER GAL			
97190059									6486	\$	1,275.00
97190059				7500	EACH	\$	-	FED SUPER FUND TAX PER GAL EXTRA			
97190059									6486	\$	-
97190059				7500	EACH	\$	0.00	MO ADG INSPECTION FEE TAX PER GAL			
97190059									6486	\$	5.25
97190059				7500	EACH	\$	0.00	MO USTD TRANSP LOAD FEE TAX PER GAL			
97190059									6486	\$	18.75
97190063	09/26/18	800559	KIESEL COMPANY	500							
								7000 GALLONS OF PREMIUM ULTRA LOW SULFUR #2 DIESEL FUEL FOR SCHOOL BUSES.			
97190063				7000	EACH	\$	2.32				
97190063									6486	\$	16,240.00
97190063				7000	EACH	\$	0.00	FED. OIL SPILL FEE			
97190063									6486	\$	14.98
97190063				7000	EACH	\$	0.00	MO AGI TAX PER GAL EXTRA			
97190063									6486	\$	7.00
97190063				7000	EACH	\$	0.17	MO STATE TAX PER GAL			
97190063									6486	\$	1,190.00

97190063					7000	EACH	\$	0.00	MO ADG INSP FEE TAX PER GAL			
97190063										6486	\$	4.90
97190063					7000	EACH	\$	0.00	MO USTD TRANSP. LOAD FEE TAX PER GAL			
97190063										6486	\$	17.50
97190066	10/02/18	615999	FROESEL OIL CO, INC	500								
									PREMIUM, ULTRA LOW SULFUR, #2 DIESEL FUEL.			
97190066					8000	EACH	\$	2.35	BID #19P-39			
97190066										6486	\$	18,792.00
97190066					8000	EACH	\$	0.00	FED OIL SPILL FEE			
97190066										6486	\$	17.12
97190066					8000	EACH	\$	0.00	MO AGI TAX PER GAL. EXTRA			
97190066										6486	\$	8.00
97190066					8000	EACH	\$	0.17	MO STATE TAX PER GAL			
97190066										6486	\$	1,360.00
97190066					8000	EACH	\$	0.00	MO ADG INSP FEE TAX PER GAL			
97190066										6486	\$	5.60
97190066					8000	EACH	\$	0.00	MO USTD TRANSP. LOAD FEE TAX PER GAL			
97190066										6486	\$	20.00
97190070	10/10/18	800559	KIESEL COMPANY	500								
									PREMIUM ULTRA LOW SULFUR, #2 DIESEL FUEL			
97190070					7350	EACH	\$	2.50	FOR SCHOOL BUSES. BID #19P-41			
97190070										6486	\$	18,367.65
97190070					7350	EACH	\$	0.00	FED OIL SPILL FEE			
97190070										6486	\$	15.73
97190070					7350	EACH	\$	0.00	MO. AGI TAX PER GALLON EXTRA			
97190070										6486	\$	7.35
97190070					7350	EACH	\$	-	FED SUPER FUND TAX PER GALLON EXTRA			
97190070										6486	\$	-
97190070					7350	EACH	\$	0.17	MO STATE TAX PER GALLON			
97190070										6486	\$	1,249.50
97190070					7350	EACH	\$	0.00	MO. ADG INSP. FEE TAX PER GALLON			
97190070										6486	\$	5.15
97190070					7350	EACH	\$	0.00	MO USTD TRANSP. LOAD FEE TAX PER GALLON			
97190070										6486	\$	18.38
97190073	10/22/18	800559	KIESEL COMPANY	500								
									PREMIUM ULTRA LOW SULFUR, #2 DIESEL FUEL			
97190073					7350	EACH	\$	2.48	FOR SCHOOL BUSES, BID #19P-45			
97190073										6486	\$	18,228.00
97190073					7350	EACH	\$	0.00	FED OIL SPILL FEE			
97190073										6486	\$	15.73
97190073					7350	EACH	\$	0.00	MO AGI TAX PER GAL EXTRA			
97190073										6486	\$	7.35
97190073					7350	EACH	\$	-	FED SUPER FUND TAX PER GAL EXTRA			
97190073										6486	\$	-

97190073					7350	EACH	\$	0.17	MO STATE TAX PER GAL			
97190073										6486	\$	1,249.50
97190073					7350	EACH	\$	0.00	MO ADG INSP FEE TAX PER GAL			
97190073										6486	\$	5.15
97190073					7350	EACH	\$	0.00	MO USTD TRANSP LOAD FEE TAX PER GAL			
97190073										6486	\$	18.38
97190081	11/01/18	800559	KIESEL COMPANY		500							
									PREMIUM ULTRA LOW SULFUR, #2 DIESEL FUEL			
97190081					7350	EACH	\$	2.34	FOR SCHOOL BUSES, BID #19P-52			
97190081										6486	\$	17,191.65
97190081					7350	EACH	\$	0.00	FED OIL SPILL FEE			
97190081										6486	\$	15.73
97190081					7350	EACH	\$	0.00	MO AGI TAX PER GAL EXTRA			
97190081										6486	\$	7.35
97190081					7350	EACH	\$	-	FED SUPER FUND TAX PER GAL EXTRA			
97190081										6486	\$	-
97190081					7350	EACH	\$	0.17	MO STATE TAX PER GAL			
97190081										6486	\$	1,249.50
97190081					7350	EACH	\$	0.00	MO ADG INSP FEE TAX PER GAL			
97190081										6486	\$	5.15
97190081					7350	EACH	\$	0.00	MO USTD TRANSP LOAD FEE TAX PER GAL			
97190081										6486	\$	18.38
			ENERGY PETROLEUM									
97190086	11/20/18	642477	COMPANY		500							
									PREMIUM ULTRA LOW SULFUR, #2 DIESEL FOR			
97190086					7500	EACH	\$	2.31	SCHOOL BUSES, BID #19P-55			
97190086										6486	\$	17,325.00
97190086					7500	EACH	\$	0.00	FED OIL SPILL FEE			
97190086										6486	\$	16.05
97190086					7500	EACH	\$	0.00	MO AGI TAX PER GAL EXTRA			
97190086										6486	\$	7.50
97190086					7500	EACH	\$	0.17	MO STATE TAX PER GAL			
97190086										6486	\$	1,275.00
97190086					7500	EACH	\$	0.00	MO ADG INSP. FEE TAX PER GAL			
97190086										6486	\$	5.25
97190086					7500	EACH	\$	0.00	MO USTD TRANSP LOAD FEE TAX PER GAL			
97190086										6486	\$	18.75
			ENERGY PETROLEUM									
97190091	11/26/18	642477	COMPANY		500							
									7500 GALLONS OF FUEL FOR SCHOOL BUSES. BID			
97190091					7500	EACH	\$	2.17	#19P-59			
97190091										6486	\$	16,261.50
97190091					7500	EACH	\$	0.00	FED. OIL SPILL FEE			
97190091										6486	\$	16.05
97190091					7500	EACH	\$	0.00	MO. AGI TAX PER GALLON EXTRA			

97190091								6486	\$	7.50
97190091				7500	EACH	\$	-	FED SUPER FUND TAX PER GALLON EXTRA		
97190091								6486	\$	-
97190091				7500	EACH	\$	0.17	MO. STATE TAX PER GALLON		
97190091								6486	\$	1,275.00
97190091				7500	EACH	\$	0.00	MO. ADG INSP. FEE TAX PER GALLON		
97190091								6486	\$	5.25
97190091				7500	EACH	\$	0.00	MO. USTD TRANSP. LOAD FEE TAX PER GALLON		
97190091								6486	\$	18.75
			ENERGY PETROLEUM							
97190098	12/10/18	642477	COMPANY	500						
97190098				7500	EACH	\$	1.87	DIESEL FUEL FOR SCHOOL BUSES BID #19P-66		
97190098								6486	\$	14,025.00
97190098				7500	EACH	\$	0.00	FED OIL SPILL FEE		
97190098								6486	\$	16.05
97190098				7500	EACH	\$	0.00	MO AGI TAX PER GAL EXTRA		
97190098								6486	\$	7.50
97190098				7500	EACH	\$	0.17	MO STATE TAX PER GAL		
97190098								6486	\$	1,275.00
97190098				7500	EACH	\$	0.00	MO ADG INSP FEE TAX PER GAL		
97190098								6486	\$	5.25
97190098				7500	EACH	\$	0.00	MO USTD TRANSP. LOAD FEE TAX PER GAL		
97190098								6486	\$	18.75
97190100	12/14/18	800559	KIESEL COMPANY	500						
97190100				7300	EACH	\$	1.74	PREMIUM, ULTRA LOW SULFUR, #2 DIESEL FUEL FOR SCHOOL BUSES.		
97190100								6486	\$	12,698.35
97190100				7300	EACH	\$	0.00	FED OIL SPILL FEE		
97190100								6486	\$	15.62
97190100				7300	EACH	\$	0.00	MO AGI TAX PER GAL EXTRA		
97190100								6486	\$	7.30
97190100				7300	EACH	\$	0.17	MO STATE TAX PER GALLON		
97190100								6486	\$	1,241.00
97190100				7300	EACH	\$	0.00	MO ADG INSP FEE TAX PER GALLON		
97190100								6486	\$	5.11
97190100				7300	EACH	\$	0.00	MO USTD TRANSP LOAD FEE TAX PER GALLON		
97190100								6486	\$	18.25
85190167	08/09/18	851946	NEW SYSTEM CARPET	401						
85190167				400	EACH	\$	17.50	TRASH CAN LINERS 40" X 48" - 16 MICRON HIGH DENSITY ONLY - CLEAR - START SEALED (250/CS) APPROX CASE WGT 21.6# INTERPLAST/PITT #MR20283 MC		



